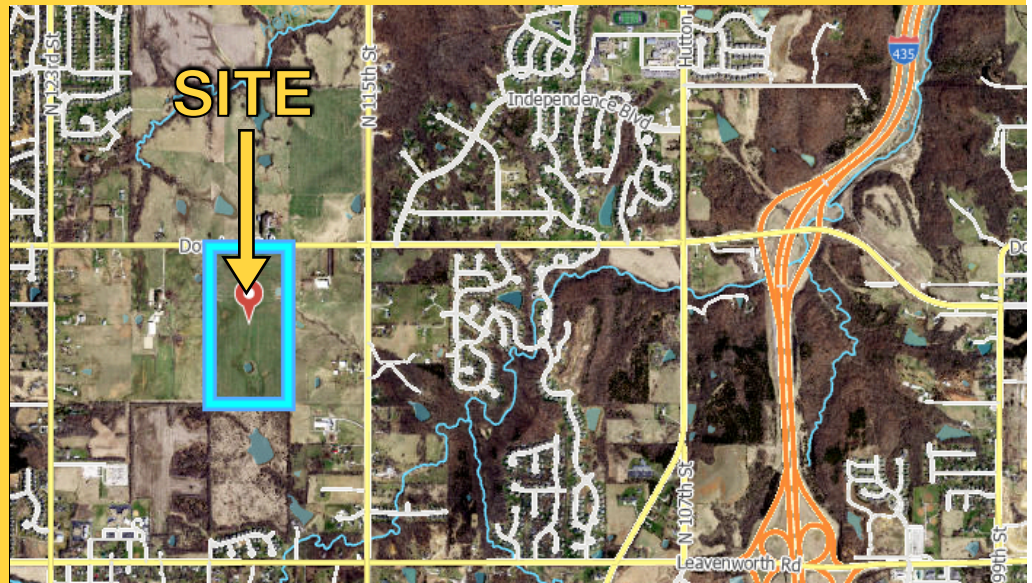




# MULTI-PURPOSE LAND FOR SALE

11641 DONAHOO RD  
KANSAS CITY, KS

80 +/- ACRES  
AVAILABLE



- HIGHLY SOUGHT AFTER LOCATION, I-435, JUST NORTH OF I-70; MINUTES FROM KS SPEEDWAY & VILLAGE WEST
- PRIME DEVELOPMENT LAND IN WYANDOTTE COUNTY
- ZONED AG - MASTER PLANNED FOR RESIDENTIAL/COMMERCIAL

## Brought To You By

Jonathan Cutler | 913.660.8816  
[j.cutler@ensignexecutivegroup.com](mailto:j.cutler@ensignexecutivegroup.com)

Jib Felter | 913.333.7830  
[j.felter@ensignexecutivegroup.com](mailto:j.felter@ensignexecutivegroup.com)



**ENSIGN EXECUTIVE GROUP**



**Jonathan Cutler** | 913.660.8816  
[j.cutler@ensignexecutivegroup.com](mailto:j.cutler@ensignexecutivegroup.com)

**Jib Felter** | 913.333.7830  
[j.felter@ensignexecutivegroup.com](mailto:j.felter@ensignexecutivegroup.com)

## MULTI-PURPOSE LAND FOR SALE

**Price:** \$2,400,000

**Address:** 11641 Donahoo Rd, Kansas City, KS 66109

**Lot Size:** 80 +/- Acres

**Utilities:** Access to water, gas, electric and sewer

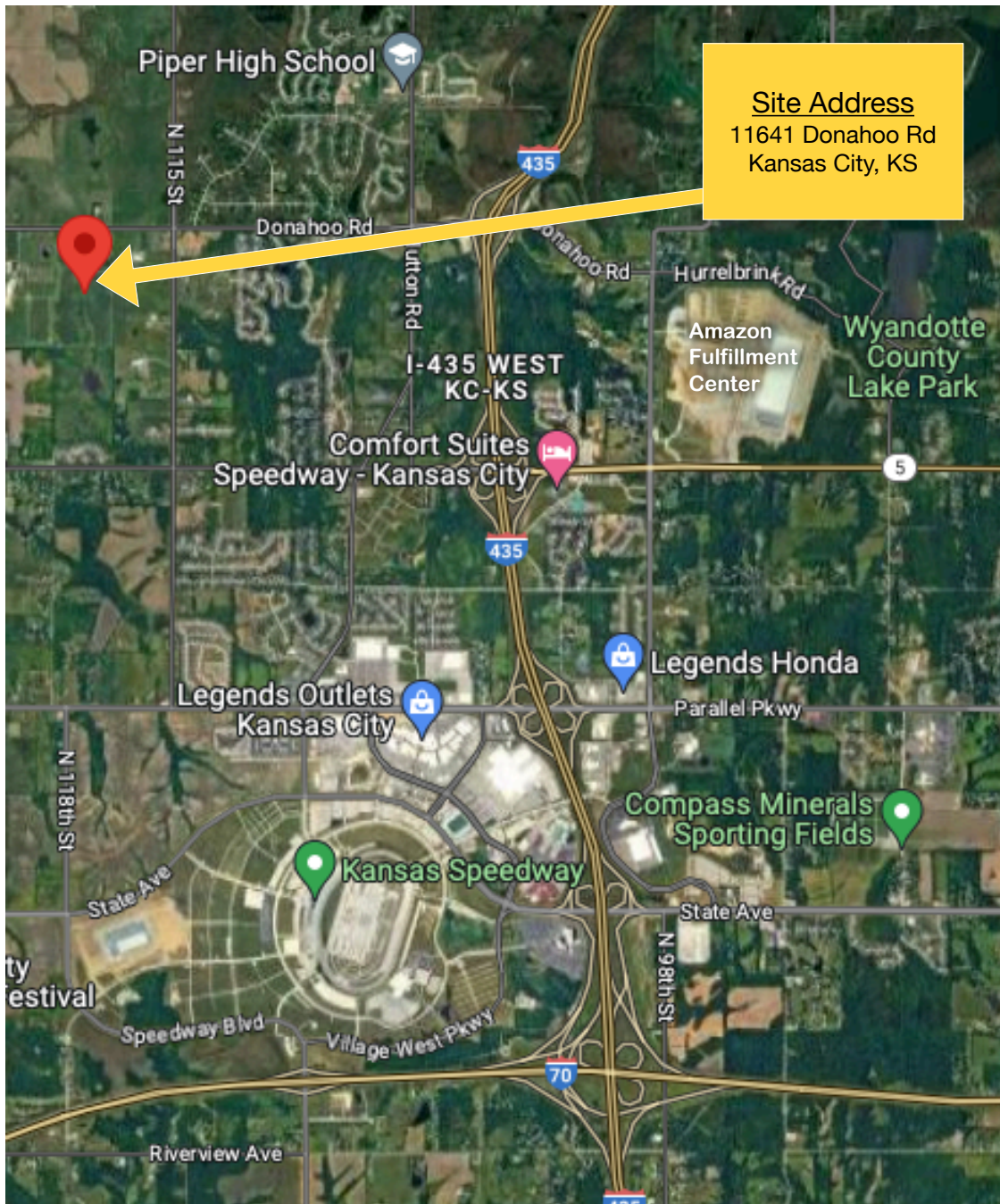
**Zoning:** AG, Master Planned for Residential/Commercial

**School District:** Piper School District

### Features:

- Highly sought after location, I-435, Just North of I-70
- Approximately 80 acres of Master Planned Residential/Commercial property. (Commercial frontage on Donahoo Rd; Residential remainder)
- Access from Donahoo Rd
- Interesting Trip Times:

Amazon Fulfillment Center	7 Min	3.9 Miles
Wyandotte County Lake Park	8 Min	3.6 Miles
Kansas Speedway	12 Min	4.8 Miles
Sporting KC Soccer - Children's Mercy Park	9 Min	5.8 Miles
Village West: Great Wolf Lodge, Legends Outlets, Bass Pro Shops, Nebraska Furniture Mart	8 Min	3.5 Miles
MCI (Airport)	22 Min	21 Miles
Sprint Center / Power & Light District	22 Min	20 Miles
Lawrence, KS	31 Min	31 Miles



To receive additional information, or to schedule a ground tour, please feel free to call us:

---

Jonathan Cutler | 913.660.8816 | [j.cutler@ensignexecutivegroup.com](mailto:j.cutler@ensignexecutivegroup.com)  
Jib Felter | 913.333.7830 | [j.felter@ensignexecutivegroup.com](mailto:j.felter@ensignexecutivegroup.com)