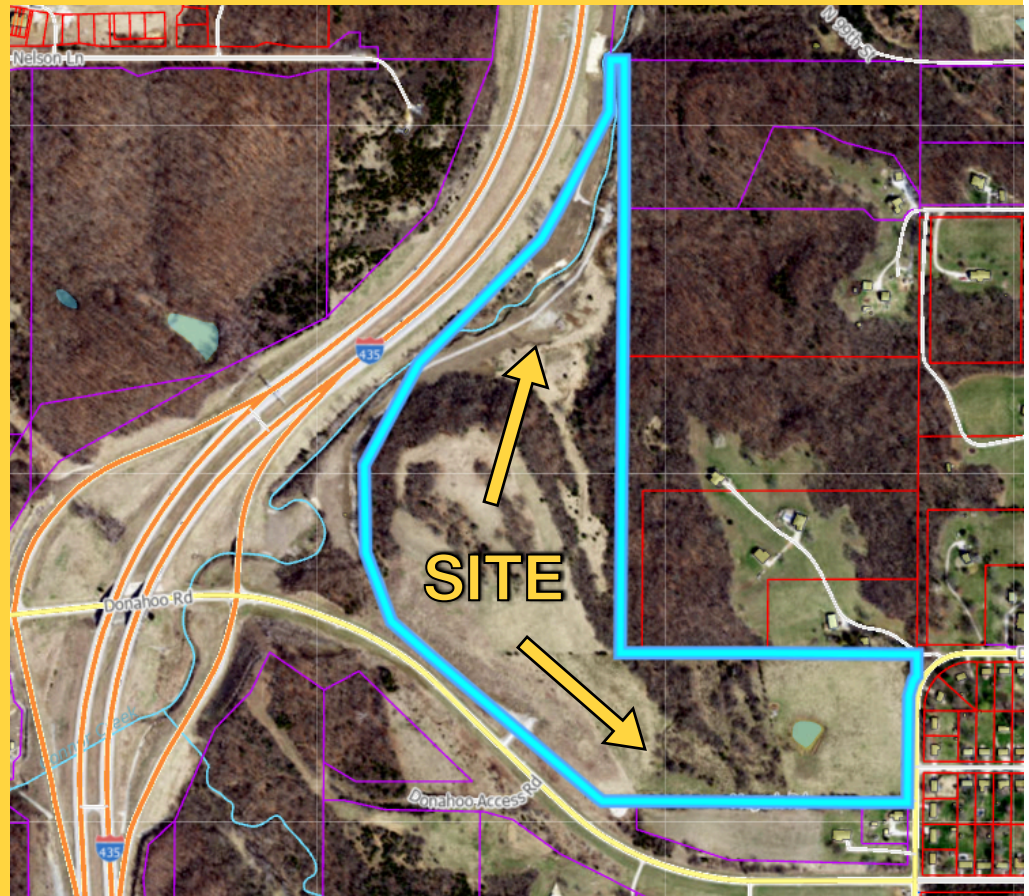


# MULTI-PURPOSE LAND FOR SALE

3916 N 99TH ST  
KANSAS CITY, KS

70 +/- ACRES  
AVAILABLE



- HIGHLY SOUGHT AFTER LOCATION, I-435, JUST NORTH OF I-70; MINUTES FROM KS SPEEDWAY & VILLAGE WEST
- PRIME DEVELOPMENT LAND IN WYANDOTTE COUNTY
- ZONED AG - MASTER PLANNED FOR LIGHT INDUSTRIAL, COMMERCIAL, MULTI-FAMILY, AND/OR RESIDENTIAL

## Brought To You By

Jonathan Cutler | 913.660.8816  
[j.cutler@ensignexecutivegroup.com](mailto:j.cutler@ensignexecutivegroup.com)

Jib Felter | 913.333.7830  
[j.felter@ensignexecutivegroup.com](mailto:j.felter@ensignexecutivegroup.com)



**ENSIGN EXECUTIVE GROUP**



**Jonathan Cutler** | 913.660.8816  
[j.cutler@ensignexecutivegroup.com](mailto:j.cutler@ensignexecutivegroup.com)

**Jib Felter** | 913.333.7830  
[j.felter@ensignexecutivegroup.com](mailto:j.felter@ensignexecutivegroup.com)

## **MULTI-PURPOSE LAND FOR SALE**

**MLS#:** 2358062

**Sales Price:** \$3,800,000

**Address:** 3916 N 99th Street, Kansas City, KS 66109

**Lot Size:** 70 +/- Acres

**Utilities:** Sewer on property, Access to water, gas, electric

**Zoning:** AG, Master Planned for Light Industrial, Commercial, Multi-Family, and/or Residential

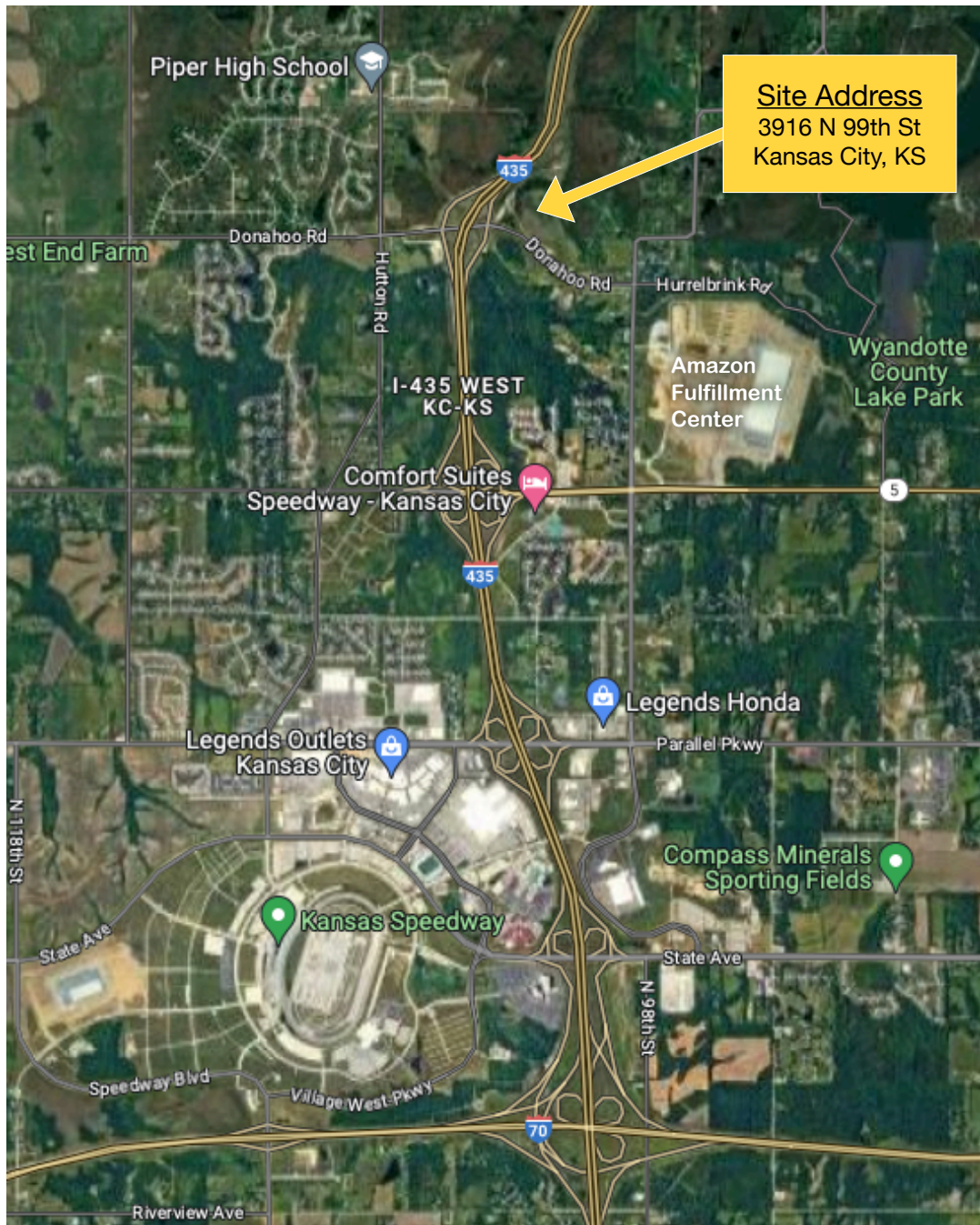
**School District:** Piper School District



Facing East on Donahoo Rd, Looking at Land  
Beyond I-435 Overpass

### **Features:**

- Highly sought after location, I-435, Just North of I-70
- Adjacent to the new Amazon Fulfillment Center & Wyandotte County Lake Park
- Minutes from:
  - Kansas Speedway/Hollywood Casino
  - Sporting KC Soccer - Children's Mercy Park
  - Village West: Great Wolf Lodge, Legends Outlets, Bass Pro Shops/Cabela's
  - Camping World
- Approximately 70 acres of Master Planned Light Industrial, Commercial, Multi-Family, and Residential property
- Access from Donahoo Rd & 99th Street





Facing Northwest on Donahoo Rd, Subject Property on Northeast (right) corner of I-435 On Ramp



Looking North; West Property Line, Connor Creek & Sewer Line



Looking North from Donahoo Access Rd



Looking North; East Property Line along 99th St



Looking West; South Property Line along Donahoo Rd



Looking Northwest; South Property Line Donahoo Access Rd



Looking East; Southwest Property Corner