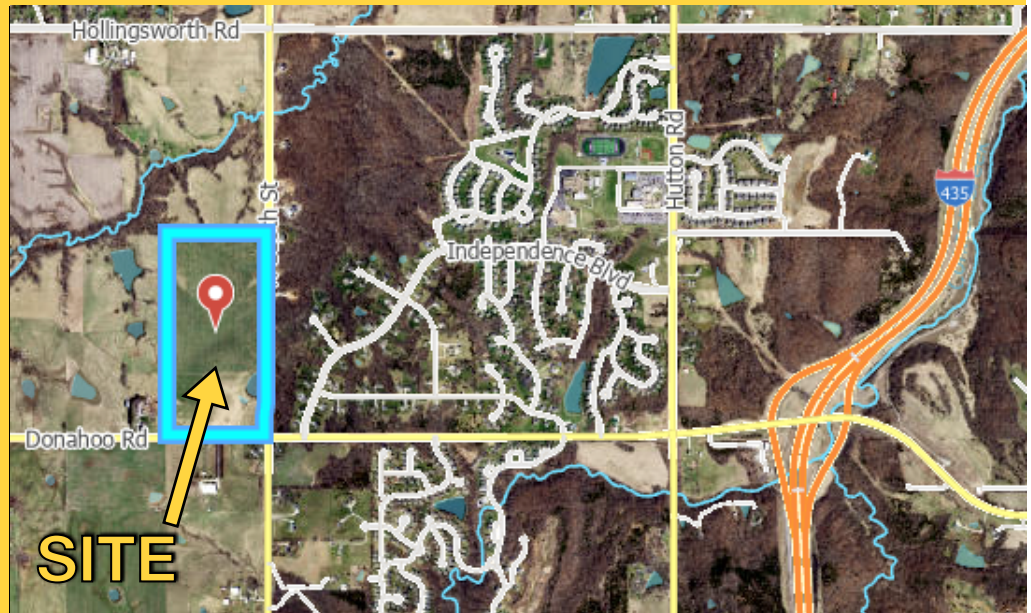


11600 DONAHOO RD
KANSAS CITY, KS

80 +/- ACRES
AVAILABLE

MULTI-PURPOSE LAND FOR SALE



- HIGHLY SOUGHT AFTER LOCATION, I-435, JUST NORTH OF I-70; MINUTES FROM KS SPEEDWAY & VILLAGE WEST
- PRIME DEVELOPMENT LAND IN WYANDOTTE COUNTY
- ZONED AG - MASTER PLANNED FOR RESIDENTIAL/ COMMERCIAL

Brought To You By

Jonathan Cutler | **913.660.8816**
j.cutler@ensignexecutivegroup.com

Jib Felter | **913.333.7830**
j.felter@ensignexecutivegroup.com



ENSIGN EXECUTIVE GROUP



Jonathan Cutler | 913.660.8816
j.cutler@ensignexecutivegroup.com

Jib Felter | 913.333.7830
j.felter@ensignexecutivegroup.com

MULTI-PURPOSE LAND FOR SALE

Price: \$2,400,000

Address: 11600 Donahoo Rd, Kansas City, KS 66109

Lot Size: 80 +/- Acres

Utilities: Access to water, gas, electric and sewer

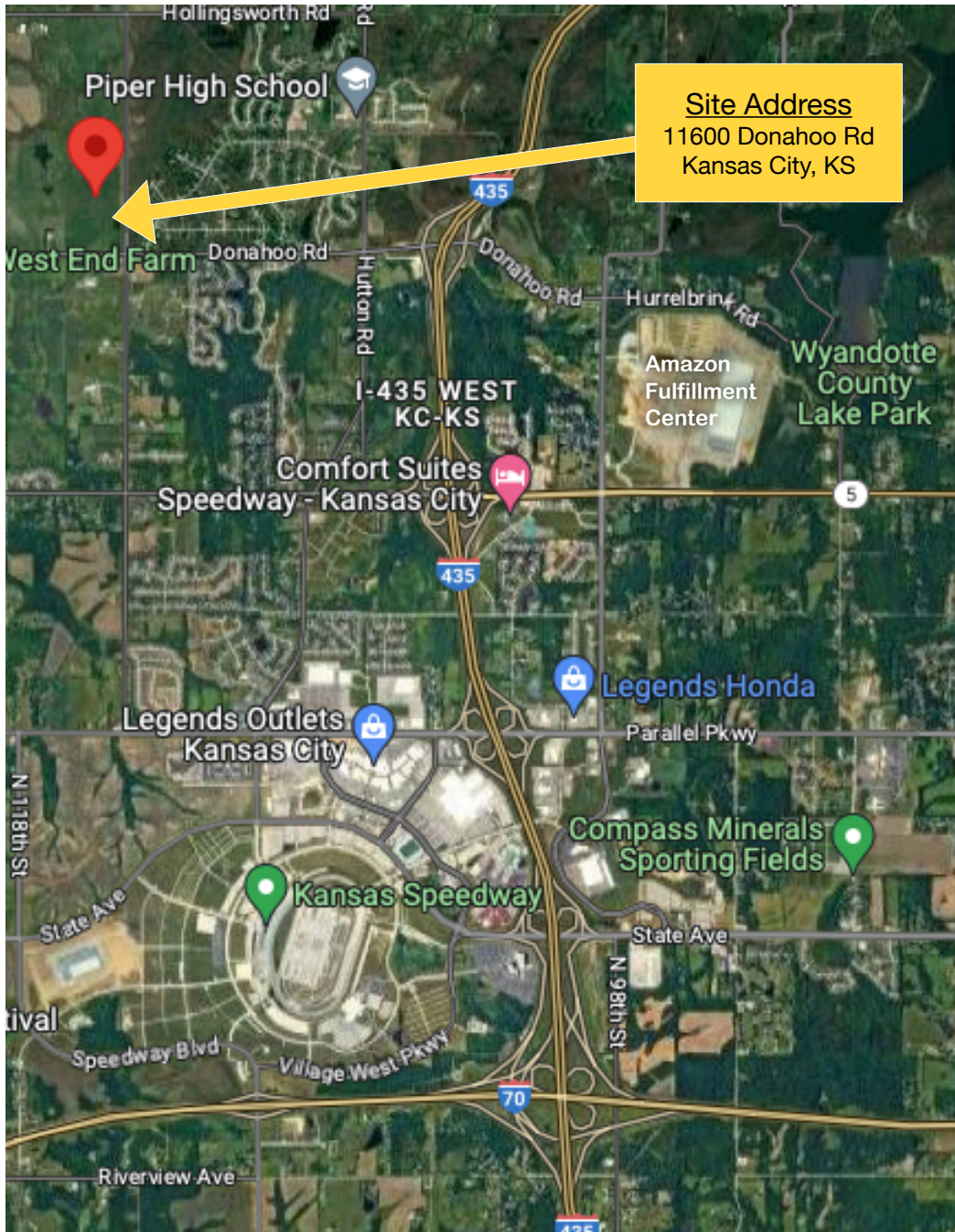
Zoning: AG, Master Planned for Residential/Commercial

School District: Piper School District

Features:

- Highly sought after location, I-435, Just North of I-70
- Approximately 80 acres of Master Planned Residential/Commercial property. (Commercial frontage on Donahoo Rd; Residential remainder)
- Access from Donahoo Rd & 115th Street
- Interesting Trip Times:

Amazon Fulfillment Center	7 Min	3.9 Miles
Wyandotte County Lake Park	8 Min	3.6 Miles
Kansas Speedway	12 Min	4.8 Miles
Sporting KC Soccer - Children's Mercy Park	9 Min	5.8 Miles
Village West: Great Wolf Lodge, Legends Outlets, Bass Pro Shops, Nebraska Furniture Mart	8 Min	3.5 Miles
MCI (Airport)	22 Min	21 Miles
Sprint Center / Power & Light District	22 Min	20 Miles
Lawrence, KS	31 Min	31 Miles



To receive additional information, or to schedule a ground tour, please feel free to call us:

Jonathan Cutler | 913.660.8816 | j.cutler@ensignexecutivegroup.com
Jib Felter | 913.333.7830 | j.felter@ensignexecutivegroup.com