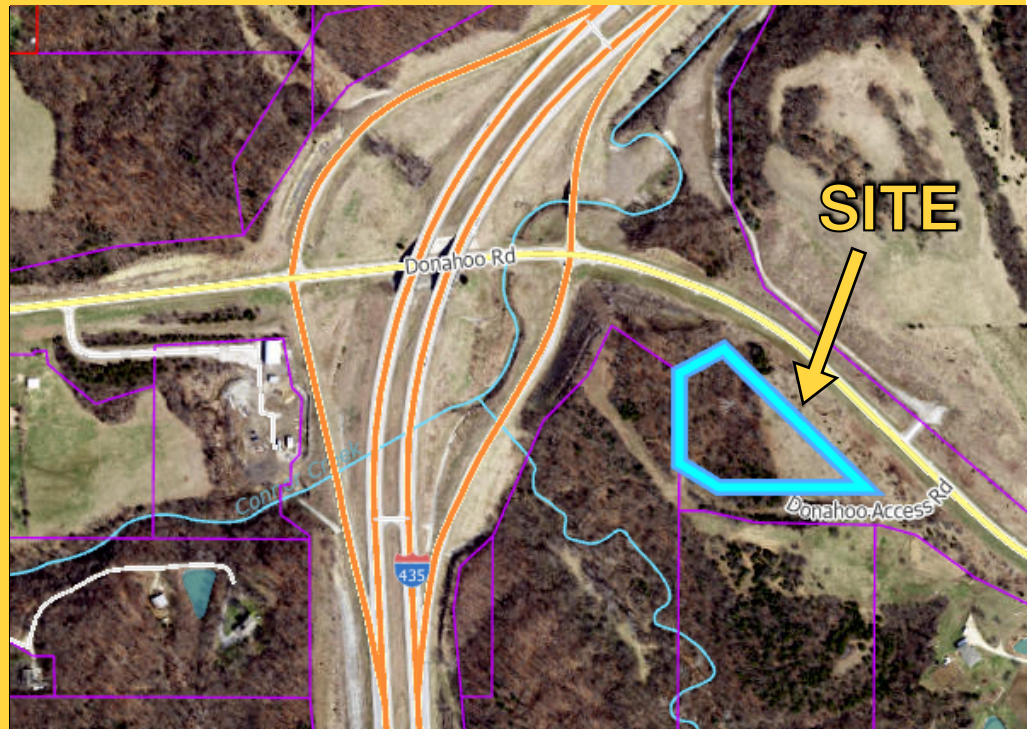


# MULTI-PURPOSE LAND FOR SALE

10203 DONAHOO RD  
KANSAS CITY, KS

4.34 +/- ACRES  
AVAILABLE



- HIGHLY SOUGHT AFTER LOCATION, I-435, JUST NORTH OF I-70; MINUTES FROM KS SPEEDWAY & VILLAGE WEST
- PRIME DEVELOPMENT LAND IN WYANDOTTE COUNTY
- ZONED AG - MASTER PLANNED FOR LIGHT INDUSTRIAL, COMMERCIAL, MULTI-FAMILY, AND/OR RESIDENTIAL

## Brought To You By

Jonathan Cutler | **913.660.8816**  
[j.cutler@ensignexecutivegroup.com](mailto:j.cutler@ensignexecutivegroup.com)

Jib Felter | **913.333.7830**  
[j.felter@ensignexecutivegroup.com](mailto:j.felter@ensignexecutivegroup.com)



**ENSIGN EXECUTIVE GROUP**



**Jonathan Cutler** | 913.660.8816  
[j.cutler@ensignexecutivegroup.com](mailto:j.cutler@ensignexecutivegroup.com)

**Jib Felter** | 913.333.7830  
[j.felter@ensignexecutivegroup.com](mailto:j.felter@ensignexecutivegroup.com)

## MULTI-PURPOSE LAND FOR SALE

**Price:** \$1.50 / Sq.Ft.

**Address:** 10203 Donahoo Rd, Kansas City, KS 66109

**Lot Size:** 4.34 +/- Acres

**Utilities:** Access to water, gas, electric, sewer

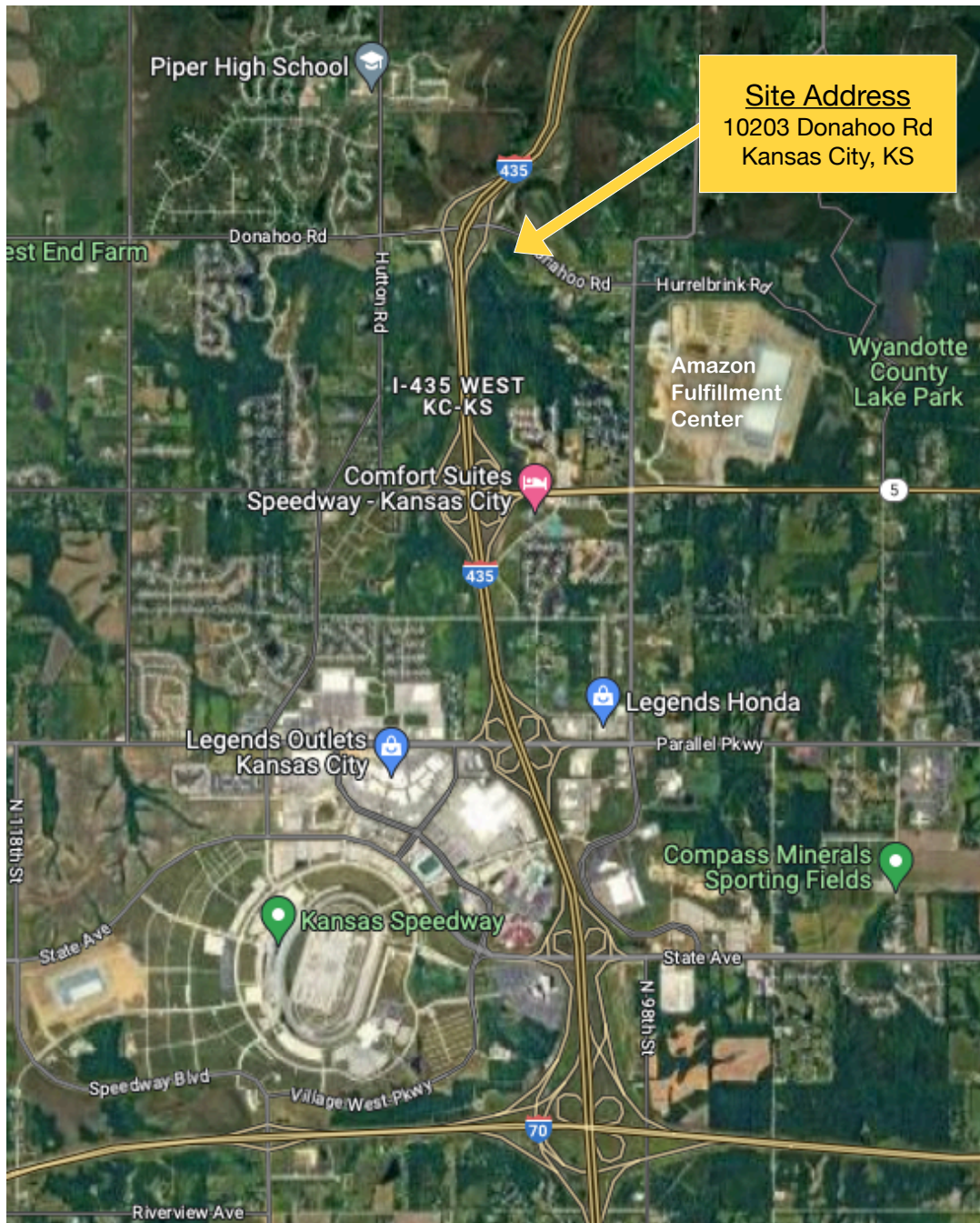
**Zoning:** AG, Master Planned for Light Industrial, Commercial, Multi-Family, and/or Residential

**School District:** Piper School District

### Features:

- Highly sought after location, I-435, Just North of I-70
- Approximately 4.34 acres of Master Planned Light Industrial, Commercial, Multi-Family, and Residential property
- Access from Donahoo Rd
- Adjacent to the new Amazon Fulfillment Center & Wyandotte County Lake/Park
- Interesting Trip Times:

Amazon Fulfillment Center	4 Min	1.6 Miles
Wyandotte County Lake/Park	4 Min	1.7 Miles
Kansas Speedway	8 Min	6.5 Miles
Sporting KC Soccer - Children's Mercy Park	5 Min	3.6 Miles
Village West: Great Wolf Lodge, Legends Outlets, Bass Pro Shops, Nebraska Furniture Mart	5 Min	3.6 Miles
MCI (Airport)	22 Min	21 Miles
Sprint Center / Power & Light District	23 Min	18 Miles
Lawrence, KS	28 Min	31 Miles



To receive additional information, or to schedule a ground tour, please feel free to call us:

---

Jonathan Cutler | 913.660.8816 | [j.cutler@ensignexecutivegroup.com](mailto:j.cutler@ensignexecutivegroup.com)  
Jib Felter | 913.333.7830 | [j.felter@ensignexecutivegroup.com](mailto:j.felter@ensignexecutivegroup.com)



Facing East on Donahoo Rd, Looking at Land Beyond I-435 Overpass



Facing Northwest on Donahoo Rd, Subject Property on Southeast (left) corner of I-435 On Ramp



Looking Southwest; North Property Line along Donahoo Rd



Looking West; North Property Line along Donahoo Rd



Looking Northwest; North Property Line Donahoo Access Rd